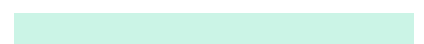




Hi, we're 50skills

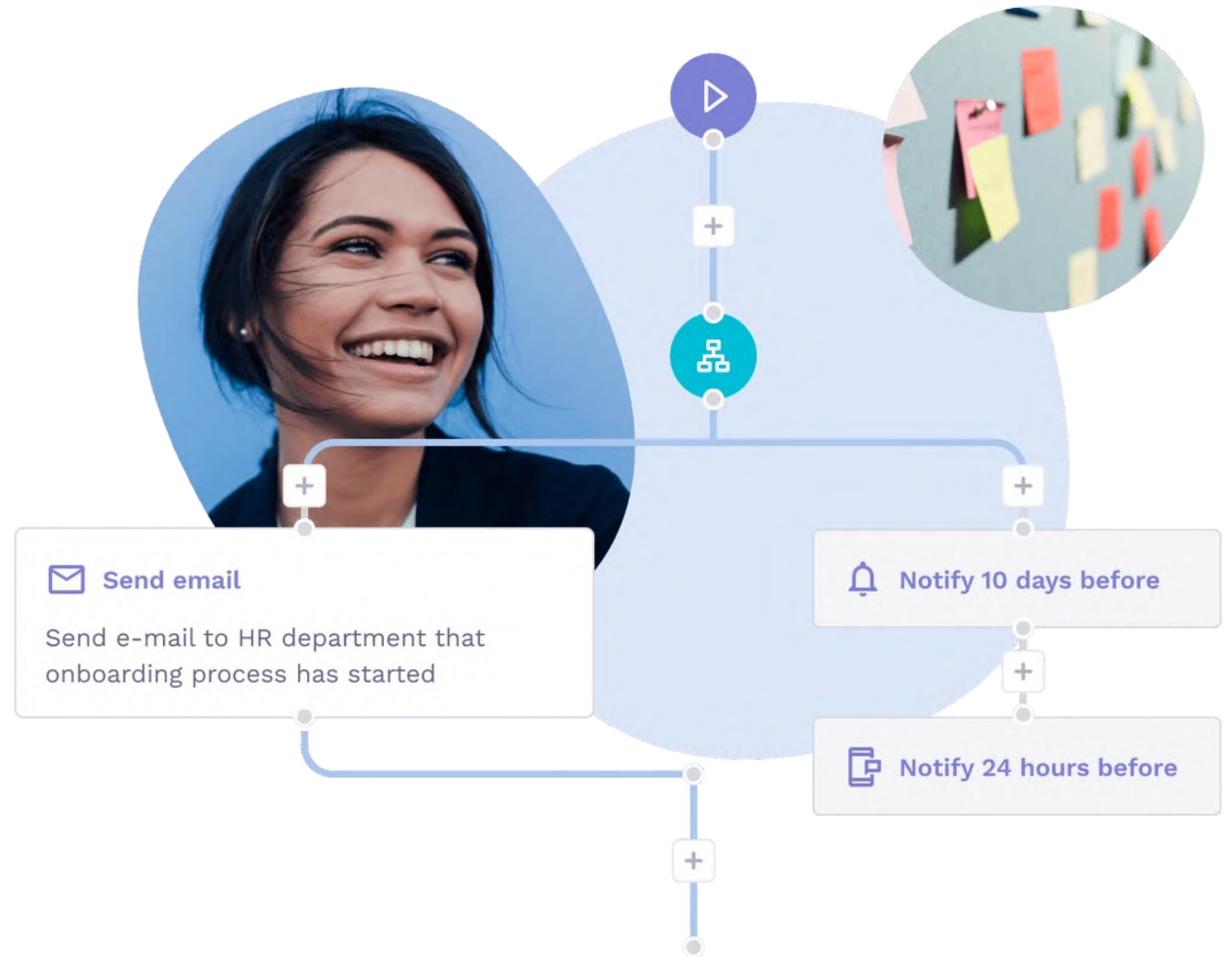
The people process automation platform for seamless employee journeys and enhanced productivity.



Automate your People Processes

Take control of your people processes with an easy to use, no-code employee journey builder, that increases productivity, performance & retention.

- Integrates with what you use.
- Lightning fast with Apple like designs in UX/UI
- Brings custom OpenAI GPT's into any process



High employee turnover, explosion in SaaS apps + AI = unprecedented people process complexity



Employee mobility at an all-time high

PEOPLE SWITCH JOBS EVERY
12-36 MONTHS

35% OF US WORKFORCE
SWITCHED JOBS IN 2021

+



management apps growing exponentially

THE AVERAGE COMPANY USES
130 SAAS APPS

18% ANNUAL GROWTH
IN AVG # SAAS APPS USED

+



Everyone is thinking how they can use OpenAI GPT's

ADD ANY CUSTOM GPT TO A WORKFLOW IN MINUTES

FORM IS FILLED OUT → GPT → NEXT ACTION TRIGGERS — IT'S WILD.



How does it work?



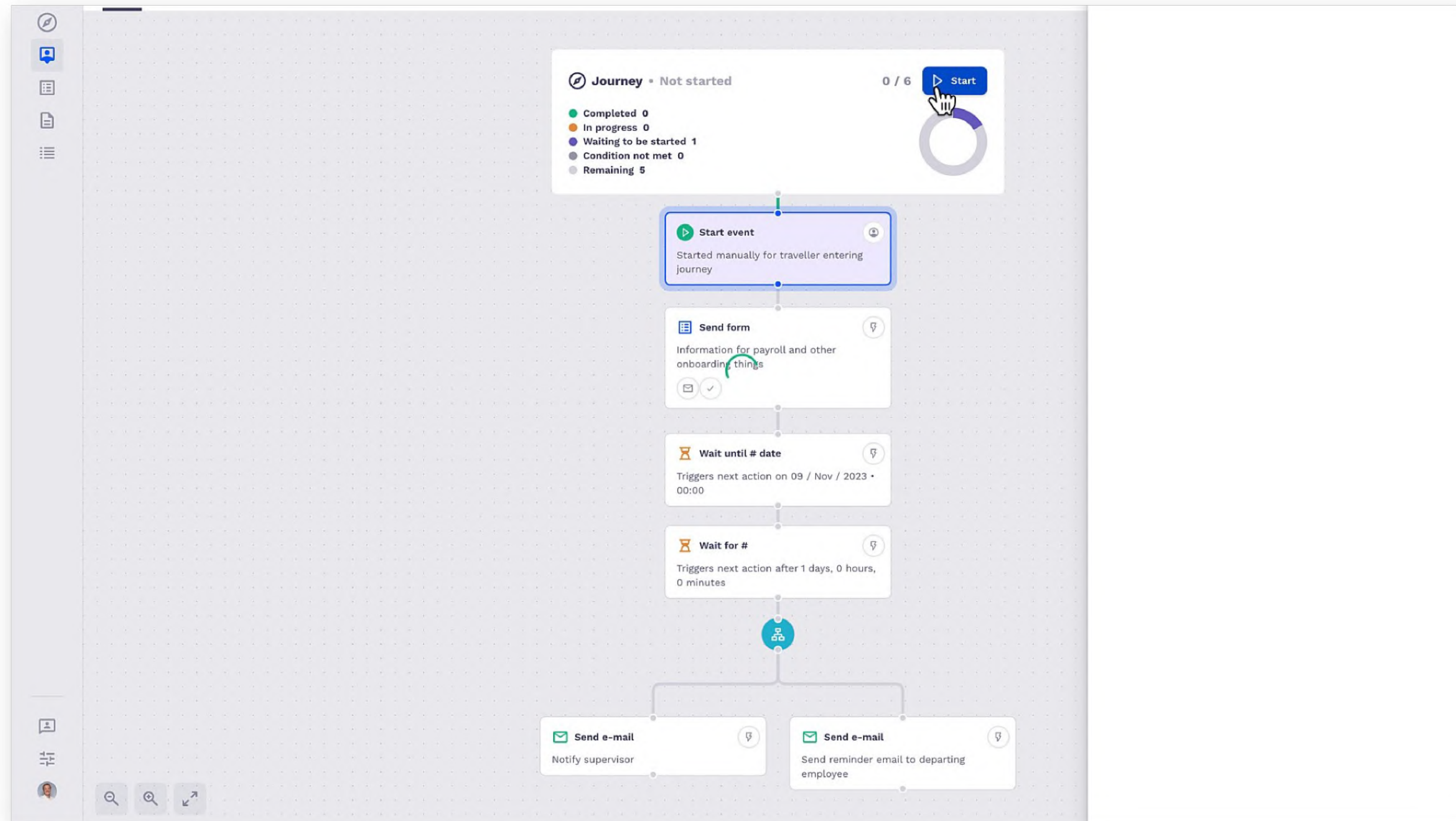
How does it work?

Managers map up people processes

The image shows a workflow builder interface. On the left, a grey grid contains a workflow step: a green play button icon above a white box labeled "Send form". The box contains the text "Information for payroll and other onboarding things" and has a lightning bolt icon and a three-dot menu icon in the top right corner. On the right, a configuration panel titled "Wait until # date" is open. It features two main options: "Journey date" (Date value from journey) and "Select date" (Fixed date). Below these is a section for "Reference Date" with a dropdown menu currently set to "First workday". Underneath are three date relative options: "Before date" (selected with a mouse cursor), "On date", and "After date". There are also input fields for "Days before" (set to 0), "Hour" (set to 09), and "Minute" (set to 00). At the bottom of the panel, it states "Triggers 0 weeks before First workday at 09:00".

How does it work?

Travellers are then added providing a great overview



How does it work?

Add any integration on your own. They turn into actions.

The image shows a software interface with a table on the left and a modal dialog box on the right. The table has several rows with headers like 'header', 'ASK (SIMPLE)', and 'UES'. A column titled 'TYPE' contains dropdown menus with options like 'text', 'email', and 'boolean'. The 'Add endpoint' dialog box has a title bar with a close button. It contains three required fields: '* Name' (a text input), '* Request type' (a dropdown menu set to 'json'), and '* Method' (a dropdown menu set to 'POST'). A mouse cursor is pointing at the 'POST' option in the 'Method' dropdown, which is open to show a list of options: POST, GET, PATCH, PUT, and DELETE.

How does it work?

Build forms. Collect data. Re-use it where needed.

Gathering Feedback



We would love your feedback

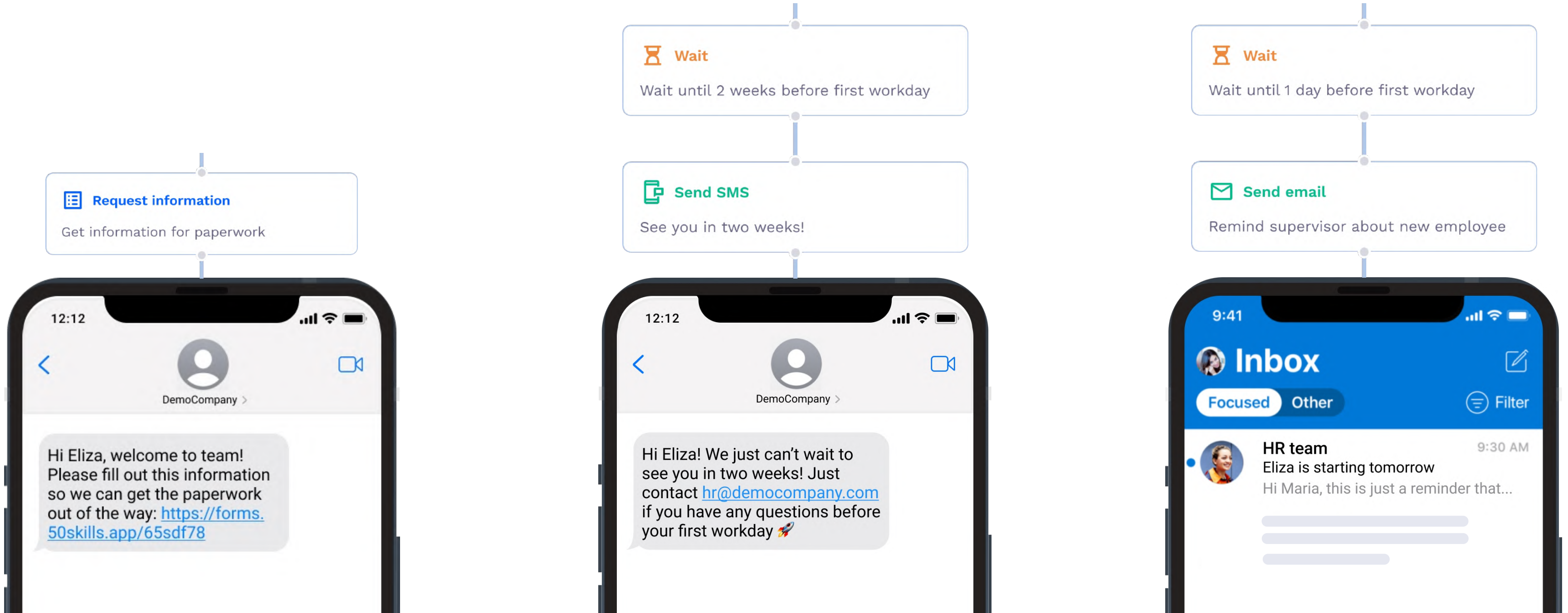
On a scale of 1-10 (10 being highest) how happy were you with your Christmas present from our workplace this year?

Select... ▼



Personalised experience

Automatically send email or SMS notifications to the right people at the right time



Templates with pre-defined journeys

[View example](#)



Welcome and team introduction

[View template](#) →



Streamlined New Hire Document Collection and Signatures

[View template](#) →



Automating requests to IT

[View template](#) →



New Hire Buddy Program

[View template](#) →



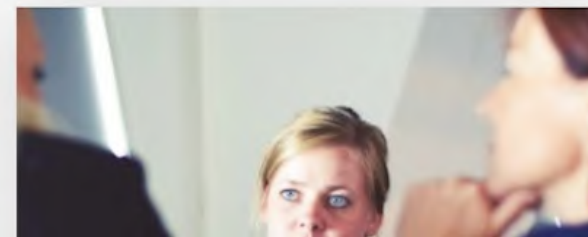
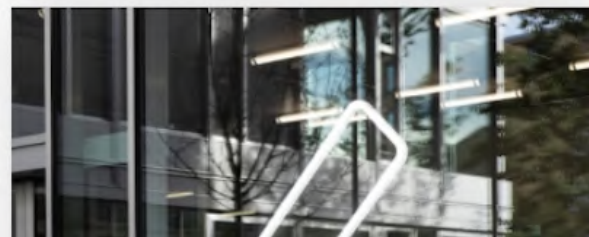
Simple white collar new hire onboarding template

[View template](#) →



Automate Offboarding Task Assignments for HR and Managers

[View template](#) →





“Since we adopted 50skills in 2018, we have been able to transform the way we automate onboarding new hires”



Snorri Jonsson, Human Resource Manager at Domino's

Bottom line



✓ Automated

**Save energy,
time & money**



✓ Professional

**Increase
retention**



✓ Productive

**Enhance
performance**